

**Anti-S100P Rabbit Monoclonal Antibody**  
**Catalog # ABO13739****Specification**

---

**Anti-S100P Rabbit Monoclonal Antibody - Product Information**

Application	WB, IHC, IF, ICC, IP
Primary Accession	<a href="#">P25815</a>
Host	Rabbit
Isotype	Rabbit IgG
Reactivity	Human
Clonality	Monoclonal
Format	Liquid

**Description**

Anti-S100P Rabbit Monoclonal Antibody . Tested in WB, IHC, ICC/IF, IP applications. This antibody reacts with Human.

**Anti-S100P Rabbit Monoclonal Antibody - Additional Information**

**Gene ID** 6286

**Other Names**

Protein S100-P, Migration-inducing gene 9 protein, MIG9, Protein S100-E, S100 calcium-binding protein P, S100P, S100E

**Calculated MW**

10400 MW KDa

**Application Details**

WB 1:500-1:2000<br>IHC 1:50-1:200<br>ICC/IF 1:50-1:200<br>IP 1:50

**Subcellular Localization**

Nucleus. Cytoplasm. Cell projection, microvillus membrane. Colocalizes with S100PBP in the nucleus. Colocalizes with EZR in the microvilli in a calcium- dependent manner.

**Tissue Specificity**

Detected in all of the tissues except brain, testis and small intestine, expression level is higher in placenta, heart, lung, skeletal muscle, spleen and leukocyte. Up- regulated in various pancreatic ductal adenocarcinomas and pancreatic intraepithelial neoplasias..

**Contents**

Rabbit IgG in phosphate buffered saline, pH 7.4, 150mM NaCl, 0.02% sodium azide and 50% glycerol, 0.4-0.5mg/ml BSA.

**Immunogen**

A synthesized peptide derived from human S100P

**Purification**

Affinity-chromatography

**Storage**

**Store at -20°C for one year. For short term storage and frequent use, store at 4°C for up to one month. Avoid repeated freeze-thaw cycles.**

**Anti-S100P Rabbit Monoclonal Antibody - Protein Information**

**Name** S100P

**Synonyms** S100E

**Function**

May function as calcium sensor and contribute to cellular calcium signaling. In a calcium-dependent manner, functions by interacting with other proteins, such as EZR and PPP5C, and indirectly plays a role in physiological processes like the formation of microvilli in epithelial cells. May stimulate cell proliferation in an autocrine manner via activation of the receptor for activated glycation end products (RAGE).

**Cellular Location**

Nucleus. Cytoplasm. Cell projection, microvillus membrane. Note=Colocalizes with S100PBP in the nucleus. Colocalizes with EZR in the microvilli in a calcium-dependent manner

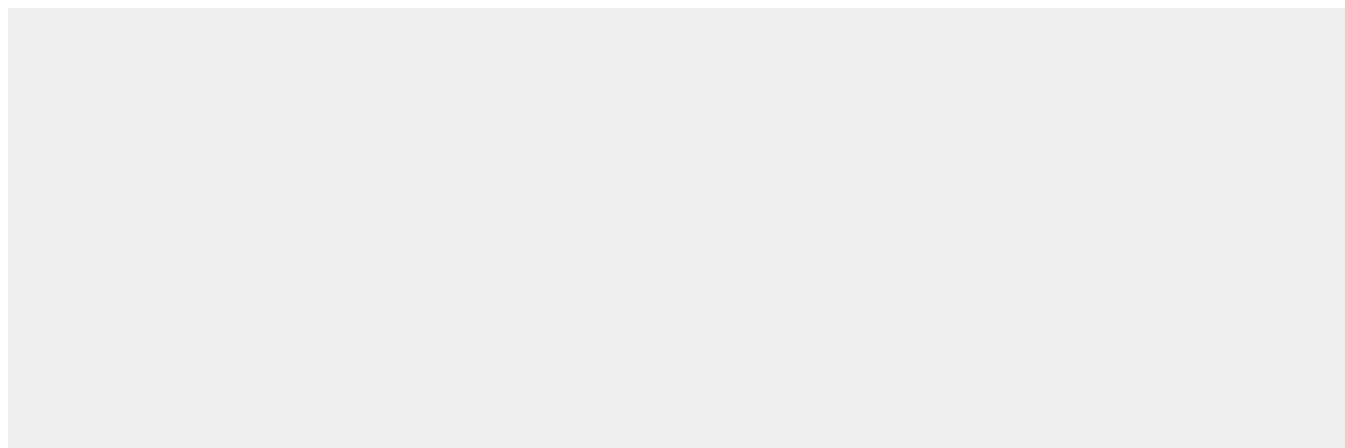
**Tissue Location**

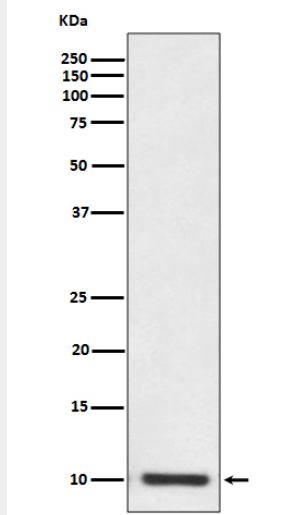
Detected in all of the tissues except brain, testis and small intestine, expression level is higher in placenta, heart, lung, skeletal muscle, spleen and leukocyte. Up-regulated in various pancreatic ductal adenocarcinomas and pancreatic intraepithelial neoplasias.

**Anti-S100P Rabbit Monoclonal Antibody - Protocols**

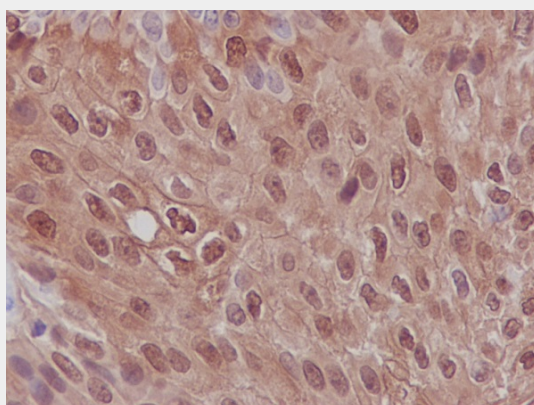
Provided below are standard protocols that you may find useful for product applications.

- [Western Blot](#)
- [Blocking Peptides](#)
- [Dot Blot](#)
- [Immunohistochemistry](#)
- [Immunofluorescence](#)
- [Immunoprecipitation](#)
- [Flow Cytometry](#)
- [Cell Culture](#)

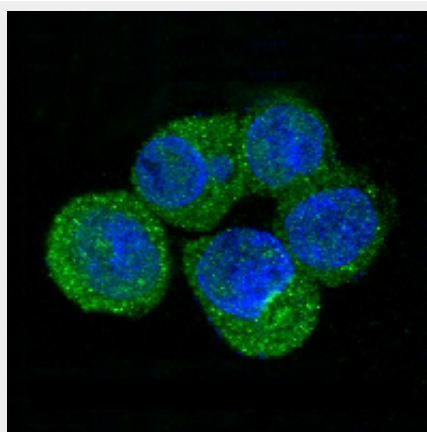
**Anti-S100P Rabbit Monoclonal Antibody - Images**



Western blot analysis of S100P expression in SW480 cell lysate.



Immunohistochemical analysis of paraffin-embedded human bladder carcinoma, using S100P Antibody.



Immunofluorescent analysis of SW480 cells, using S100P Antibody.